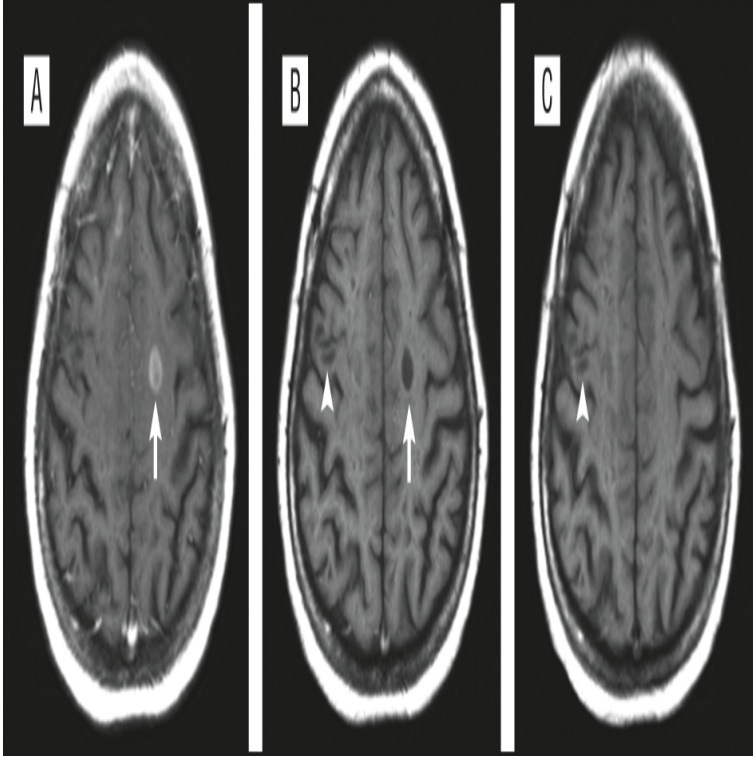


Magnetic Resonance In Multiple Sclerosis



Arch Neurol. Dec;68(12) doi: /archneurol Magnetic resonance techniques in multiple sclerosis: the present and the future. Cold Spring Harb Perspect Med. May 1;8(5). pii: a doi: / cshperspect.a Magnetic Resonance Imaging in Multiple Sclerosis. Rev Neurol Dis. Summer;2(3) Magnetic resonance imaging in multiple sclerosis. Napoli SQ(1), Bakshi R. Author information: (1)Partners, Multiple. Abstract. Magnetic resonance imaging (MRI) has become the primary technique with which neurologists support the diagnosis of multiple sclerosis (MS), and. Magnetic resonance imaging (MRI) is the preferred imaging tool used to diagnosis multiple sclerosis (MS), and to track the disease's. Background A diagnosis of multiple sclerosis in patients who present for the first (CIS) can be established with brain magnetic resonance imaging (MRI) if the. Magnetic resonance imaging (MRI) is sensitive to focal multiple sclerosis (MS) lesions. For this reason, conventional MRI measures of the burden of disease. MAGNIMS - European network of academics that share a common interest in the study of multiple sclerosis using magnetic resonance imaging (MRI). Magnetic resonance imaging (MRI) is the diagnostic tool that currently offers the most sensitive non-invasive way of imaging the brain, spinal cord, or other areas. Magnetic Resonance in Multiple Sclerosis: Medicine & Health Science Books @ bjornhalldal.com Abstract. Previous research has suggested that cerebral lesions observed on magnetic resonance imaging (MRI) of MS patients are clinically silent. Magnetic resonance imaging (MRI) of the brain is useful in the diagnosis and treatment of multiple sclerosis (MS), an inflammatory. Results. A brain MRI must be performed whenever possible in the initial diagnosis and assessment of patients suspected with MS. A spinal MRI study should be. (.) Magnetic Resonance Phase Alterations in Multiple Sclerosis Patients with Short and Long Disease Duration. PLoS ONE 10(7). Recent years have witnessed dramatic advances in the development and use of magnetic resonance imaging (MRI) techniques that can provide quantitative. Forty-two patients with the clinical diagnosis of multiple sclerosis were examined by proton magnetic resonance imaging (MRI) at T. An extensive protocol. Disease activity in multiple sclerosis (MS) is strongly linked to the formation of new lesions, which involves a complex sequence of inflammatory, degenerative, .

[\[PDF\] Computer Integrated Manufacturing: Einsatz In Der Mittelstandischen Wirtschaft Fachtagung, Saarbruck](#)

[\[PDF\] An Ascendancy Of The Heart: Ferguson And The Beginnings Of Modern Irish Literature In English](#)

[\[PDF\] A Vision Of Paradise](#)

[\[PDF\] Examining The Impact Of The Sarbanes-Oxley Act And Developments Concerning International Convergence](#)

[\[PDF\] Underground Coal Gasification: The State Of The Art](#)

[\[PDF\] War Dead Of Kendall County, Texas 1862-2010](#)

[\[PDF\] Religion And Nothingness](#)